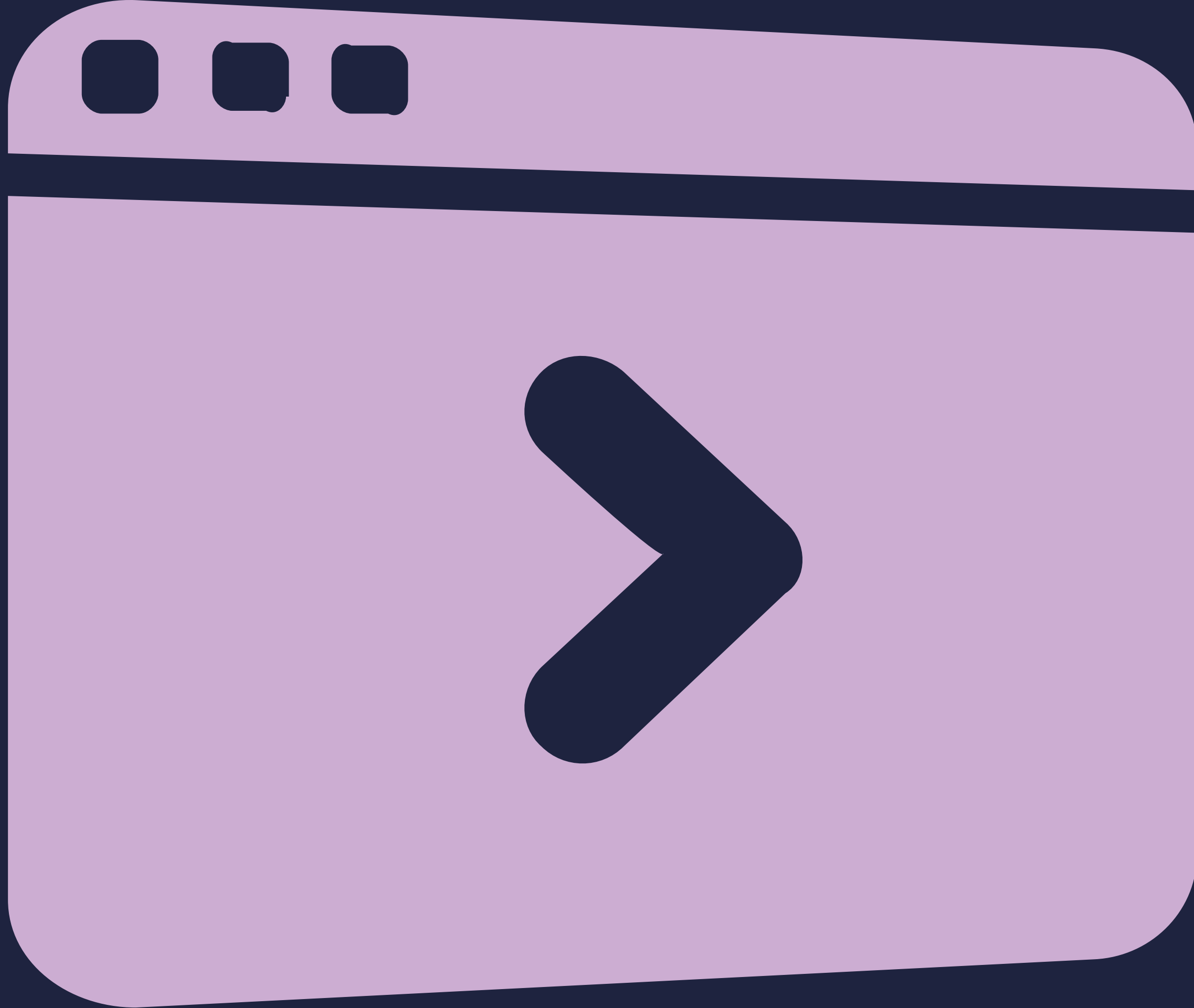
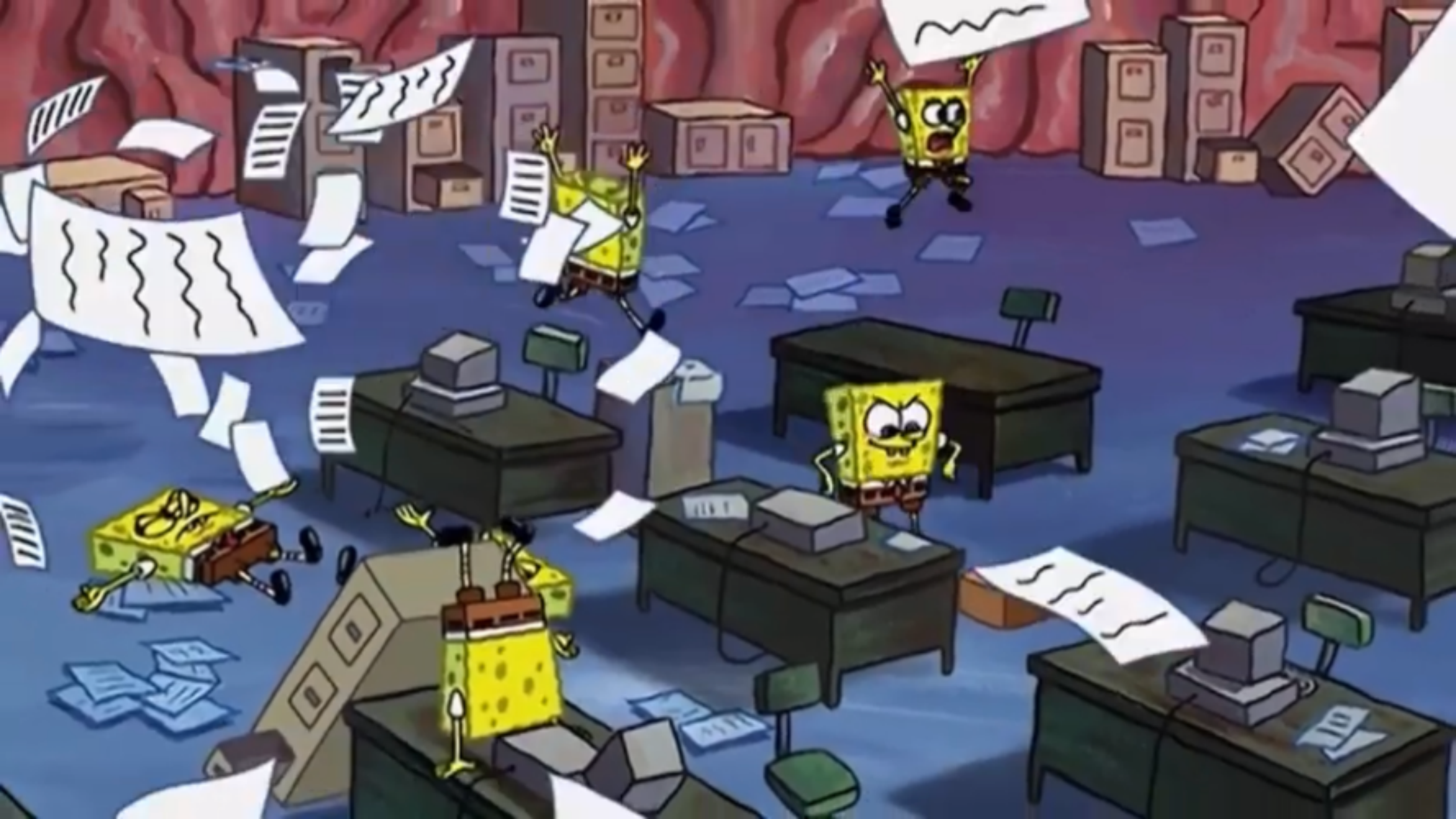
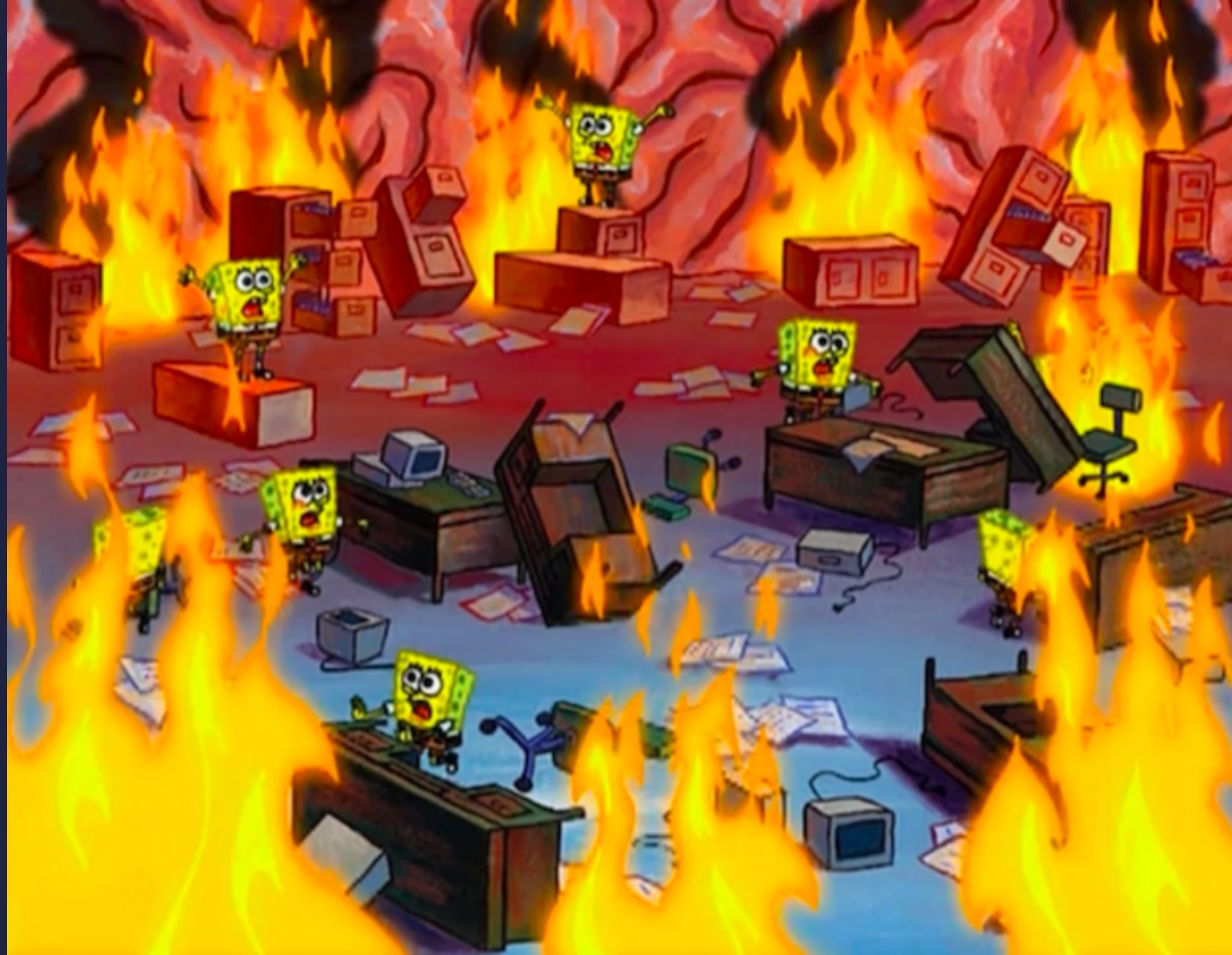


GENERIC

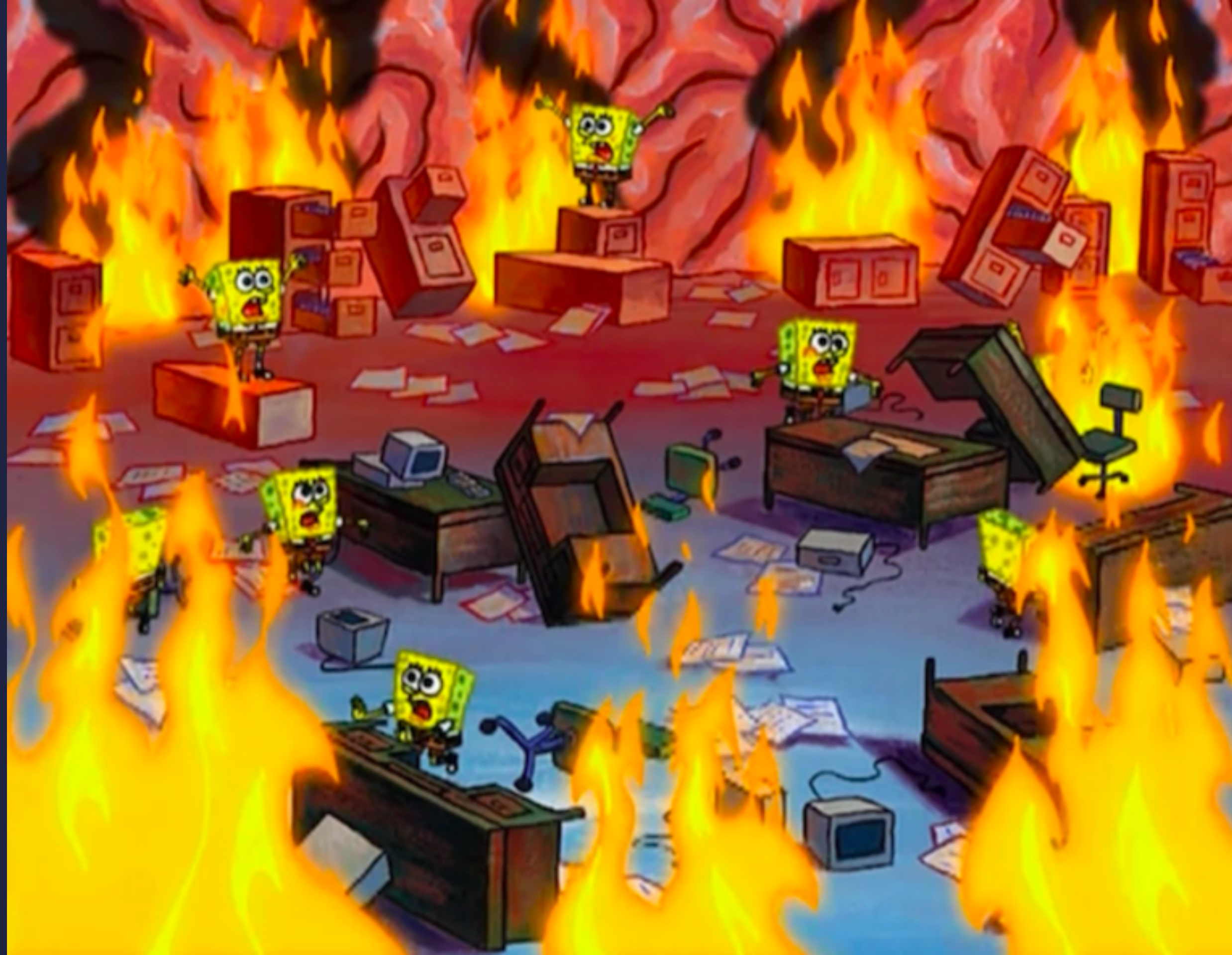
GOODSTUFF















A close-up photograph of a red and black mechanical claw, likely from a video game, holding a single red chili pepper. The claw is positioned at the top and bottom of the frame, with the pepper in the center. The background is a plain, light-colored surface.

**GENERIC
GOODSTUFF**

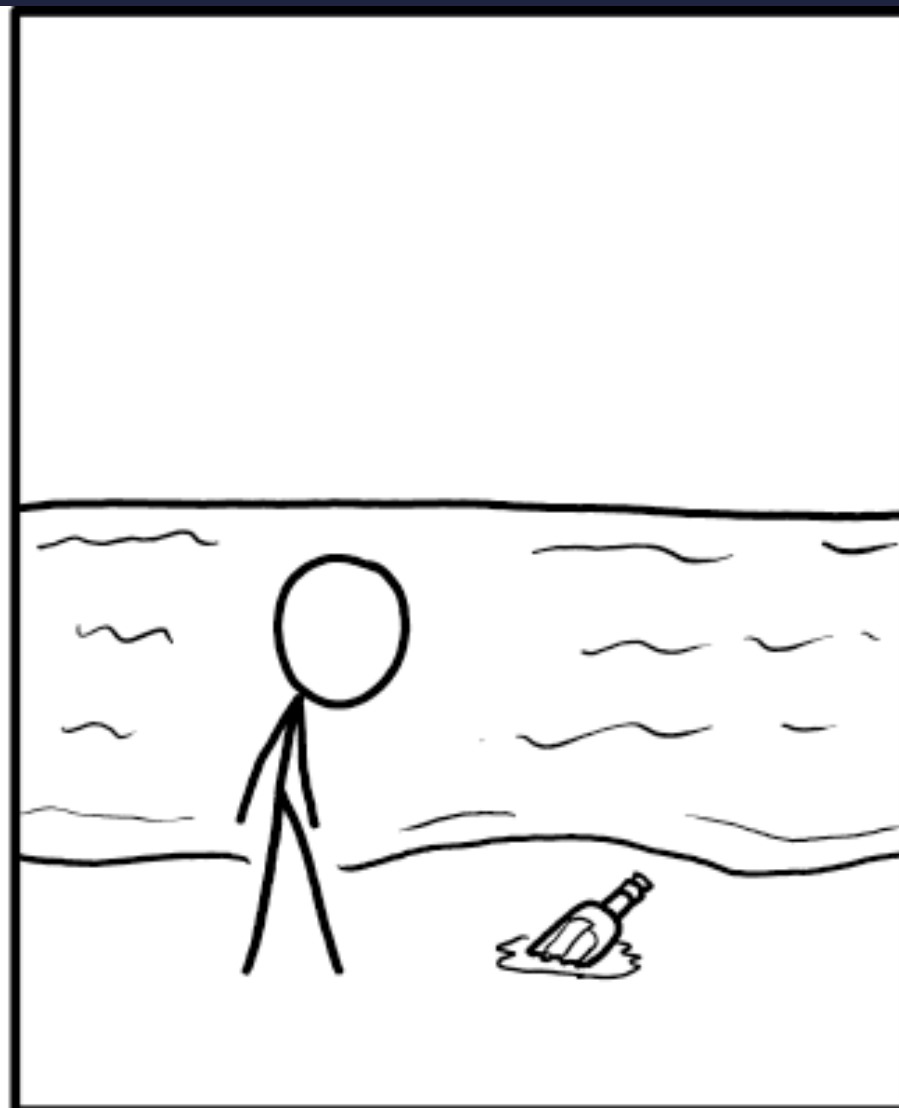
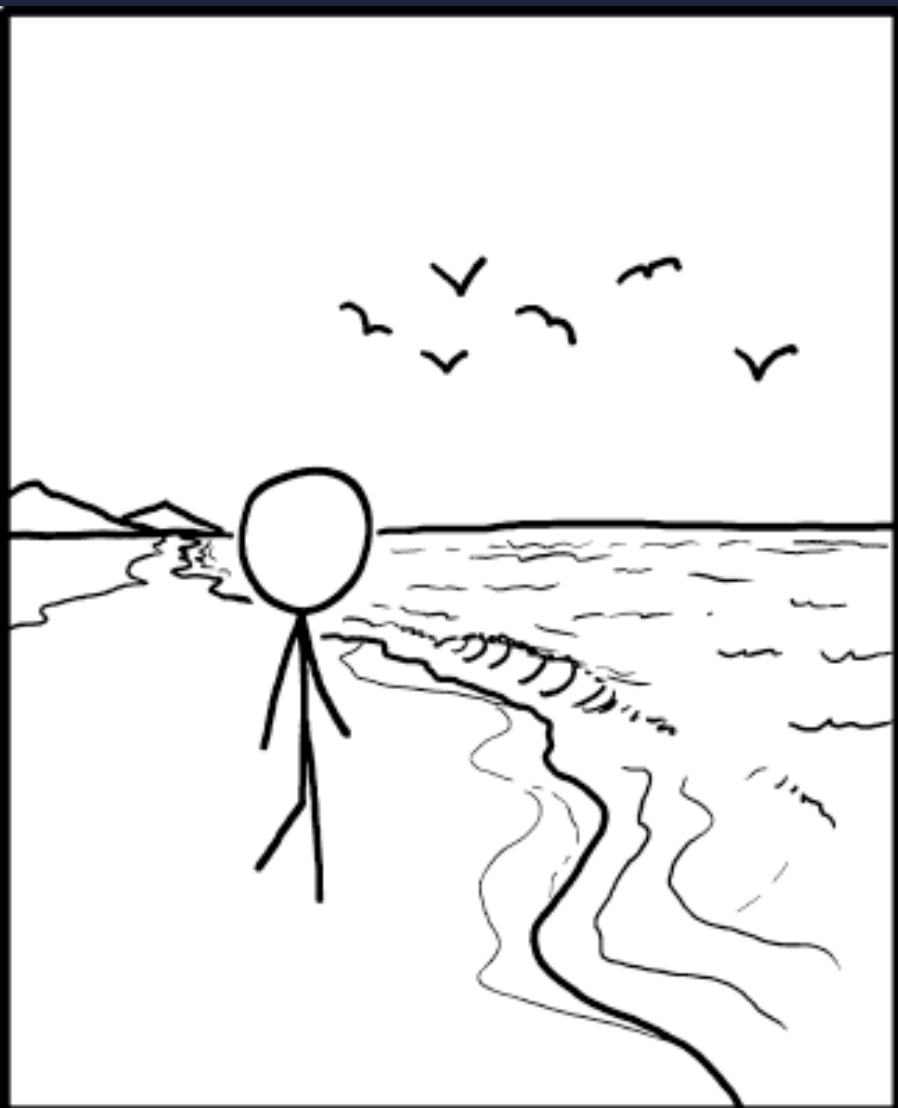




"It Depends"



SOURCE: @CAT_COSPLAY



CONTEXT!



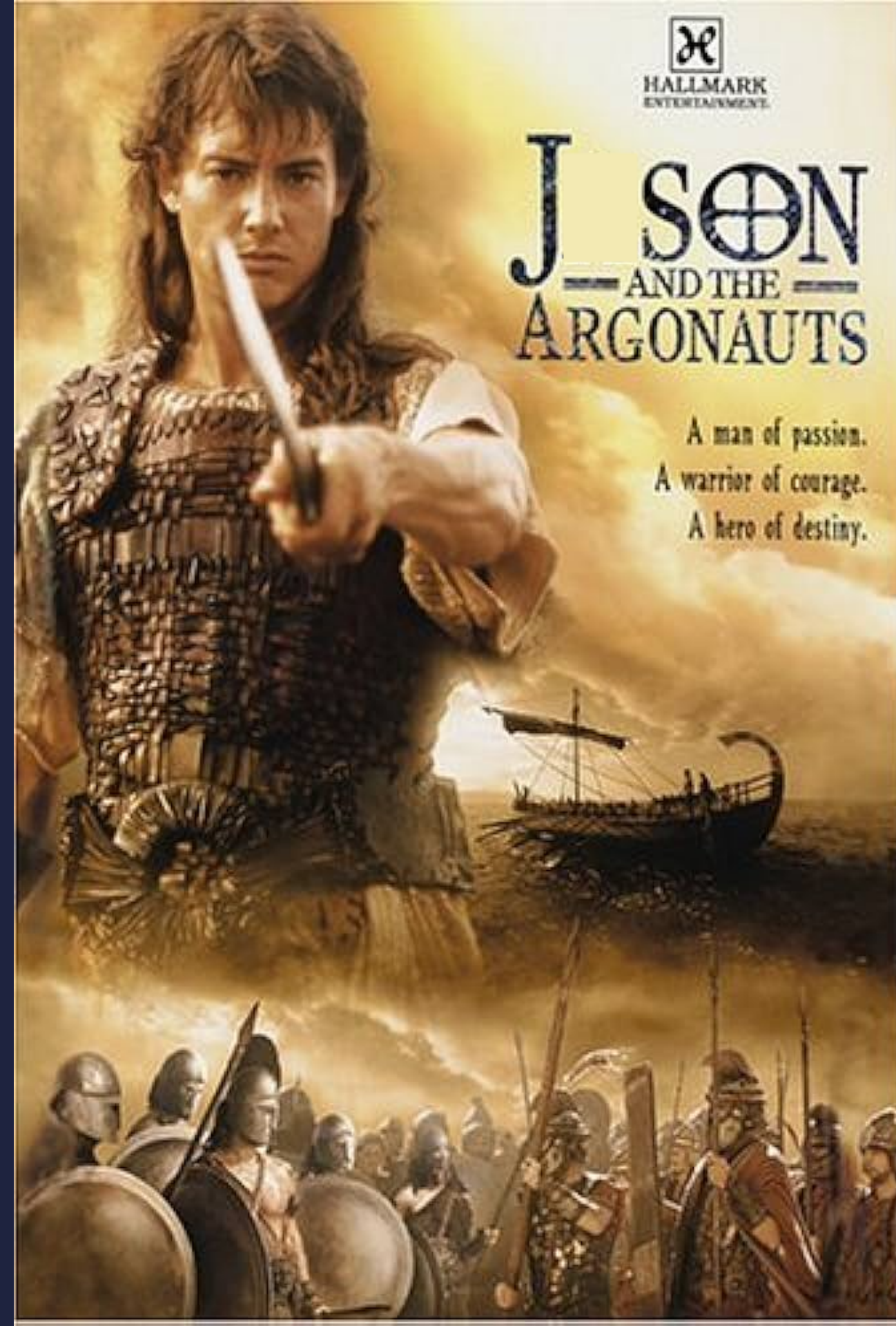
WHAT ARE WE TRYING TO DO?

**WHAT ARE THE BIGGEST OBSTACLES IN OUR
WAY?**



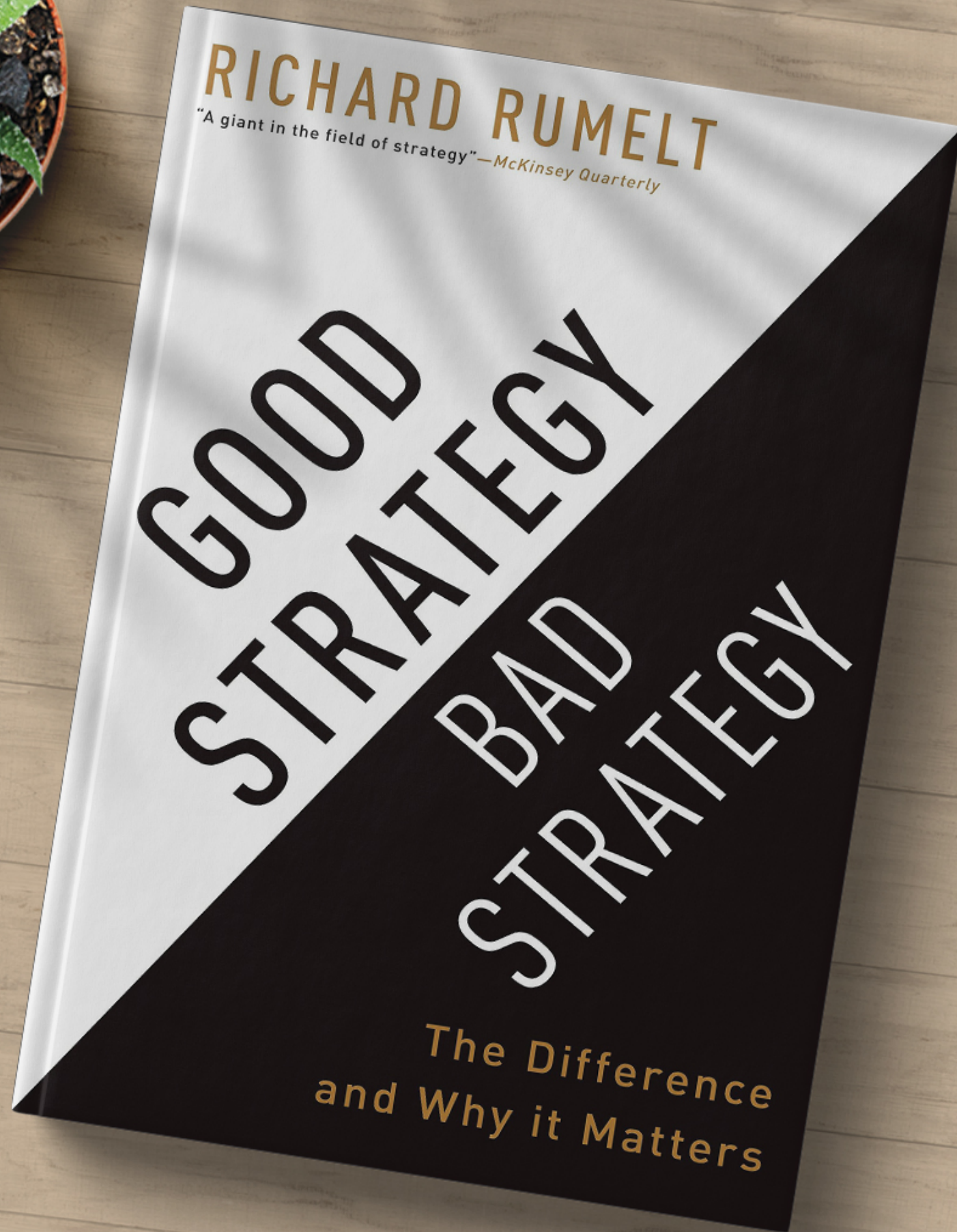
JASON — AND THE — ARGONAUTS

A man of passion.
A warrior of courage.
A hero of destiny.



**WHAT ARE THE BIGGEST OBSTACLES IN OUR
WAY?**

**WHAT WOULD BE EFFECTIVE WAYS TO
OVERCOME THOSE OBSTACLES?**



RICHARD RUMELT
"A giant in the field of strategy"—*McKinsey Quarterly*

**GOOD
STRATEGY**
**BAD
STRATEGY**

**The Difference
and Why it Matters**

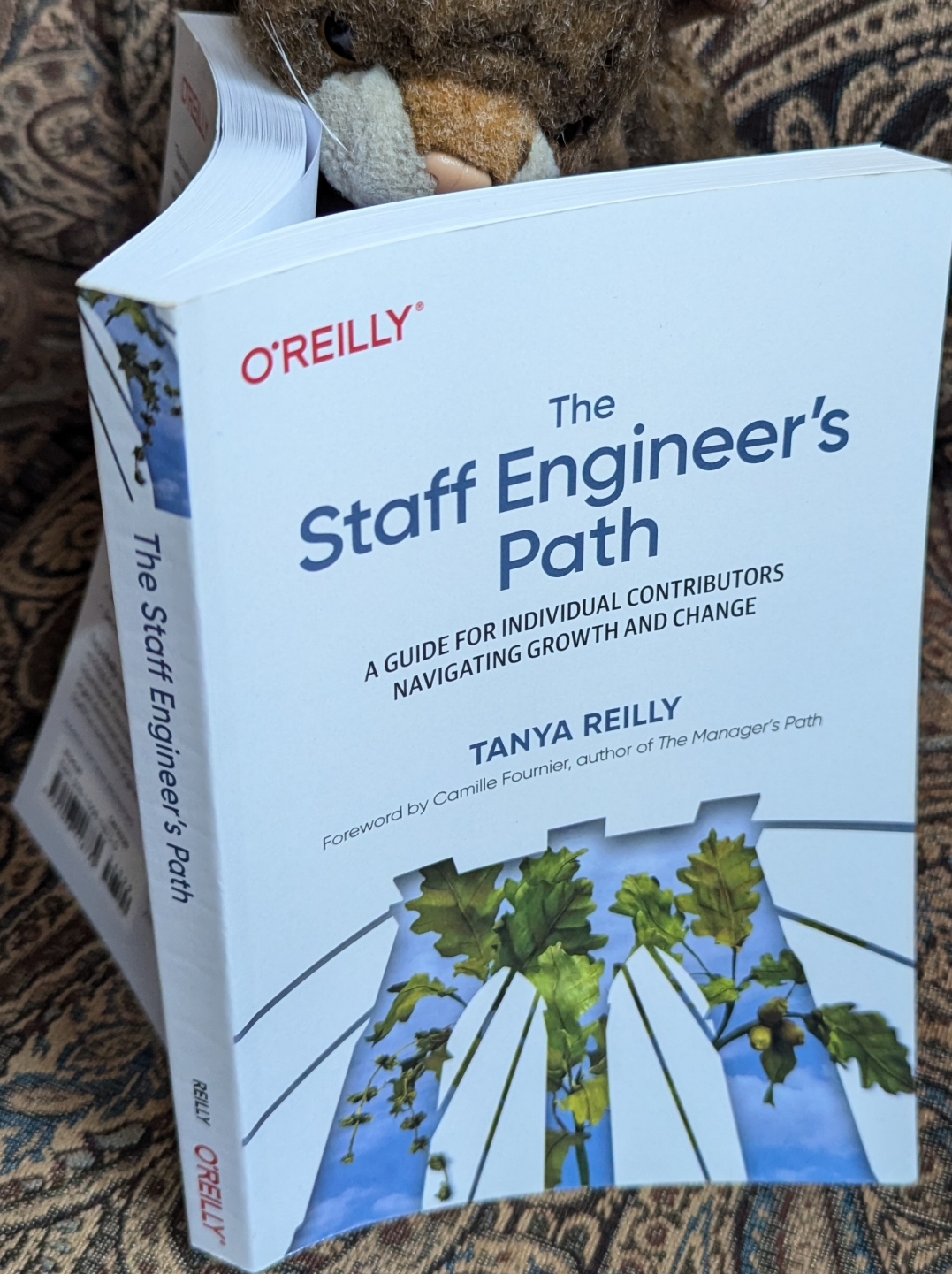
KILL IT WITH FIRE



MANAGE AGING COMPUTER SYSTEMS
(AND FUTURE PROOF MODERN ONES)

MARIANNE BELLOTTI





O'REILLY®

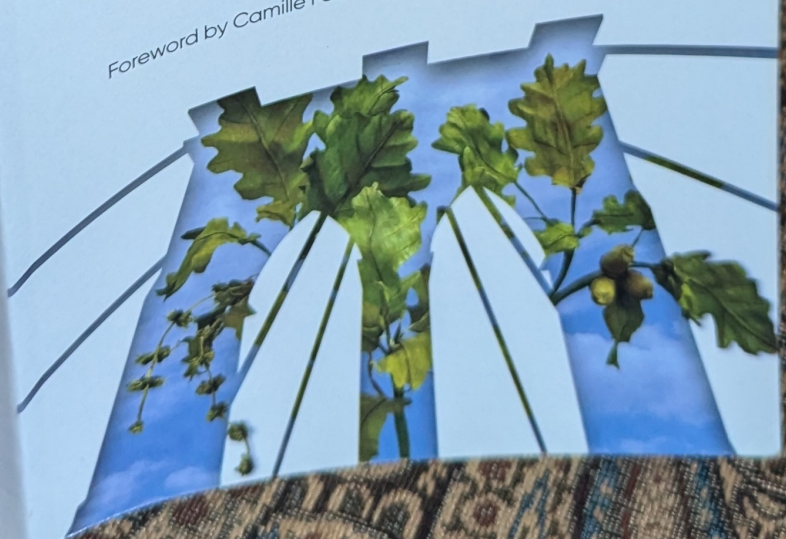
The Staff Engineer's Path

A GUIDE FOR INDIVIDUAL CONTRIBUTORS
NAVIGATING GROWTH AND CHANGE

TANYA REILLY

Foreword by Camille Fournier, author of *The Manager's Path*

The Staff Engineer's Path



REILLY
O'REILLY®

