

A photograph of a forest floor covered in vibrant autumn foliage, including moss and colorful leaves in shades of yellow, orange, and red. The background is a soft-focus bokeh of trees and light, creating a serene and natural atmosphere.

Understanding
complex
systems
without simplifying them

Rita Sodt, Google

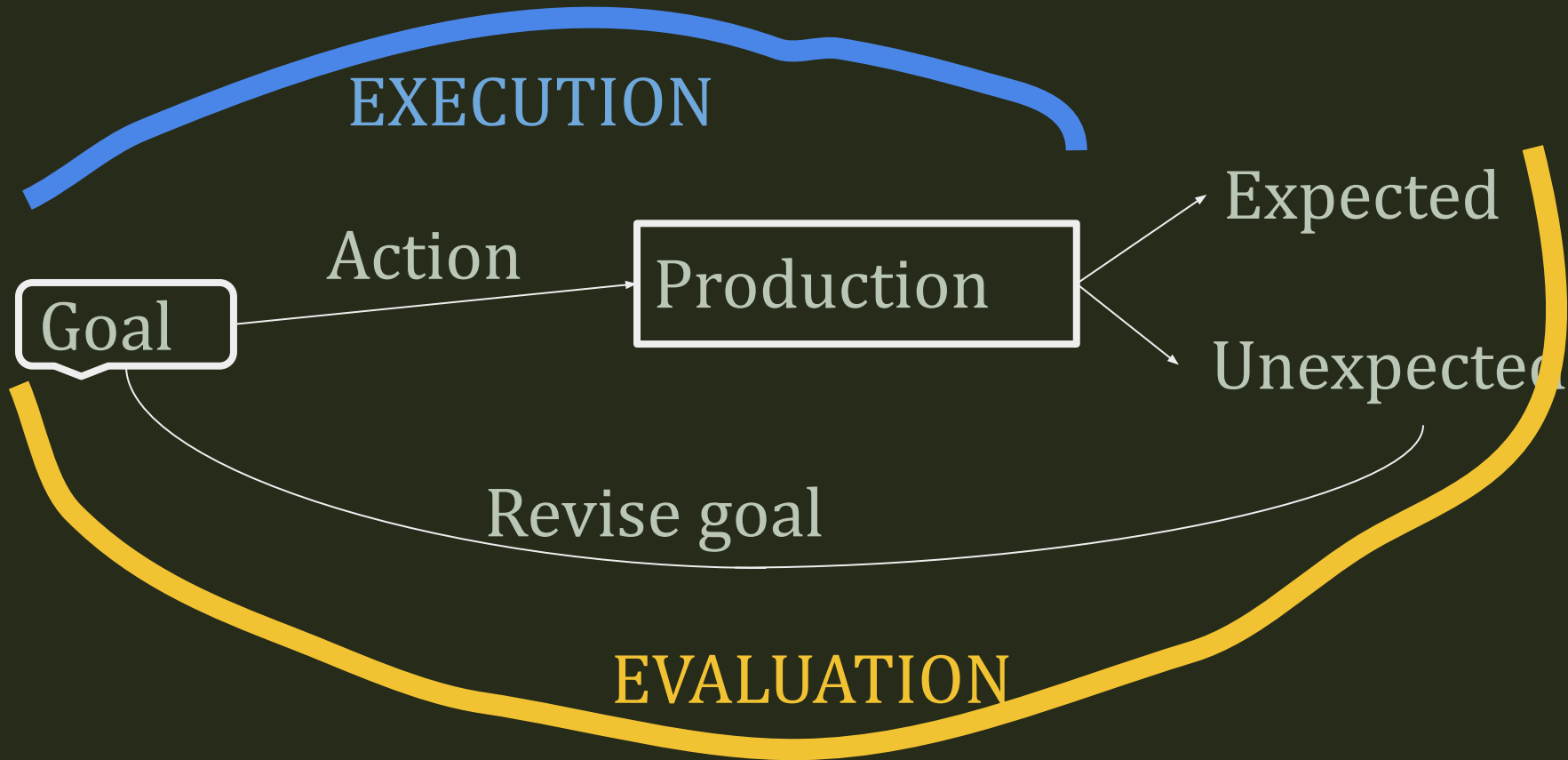
Complexity is not the problem

Ambiguity is

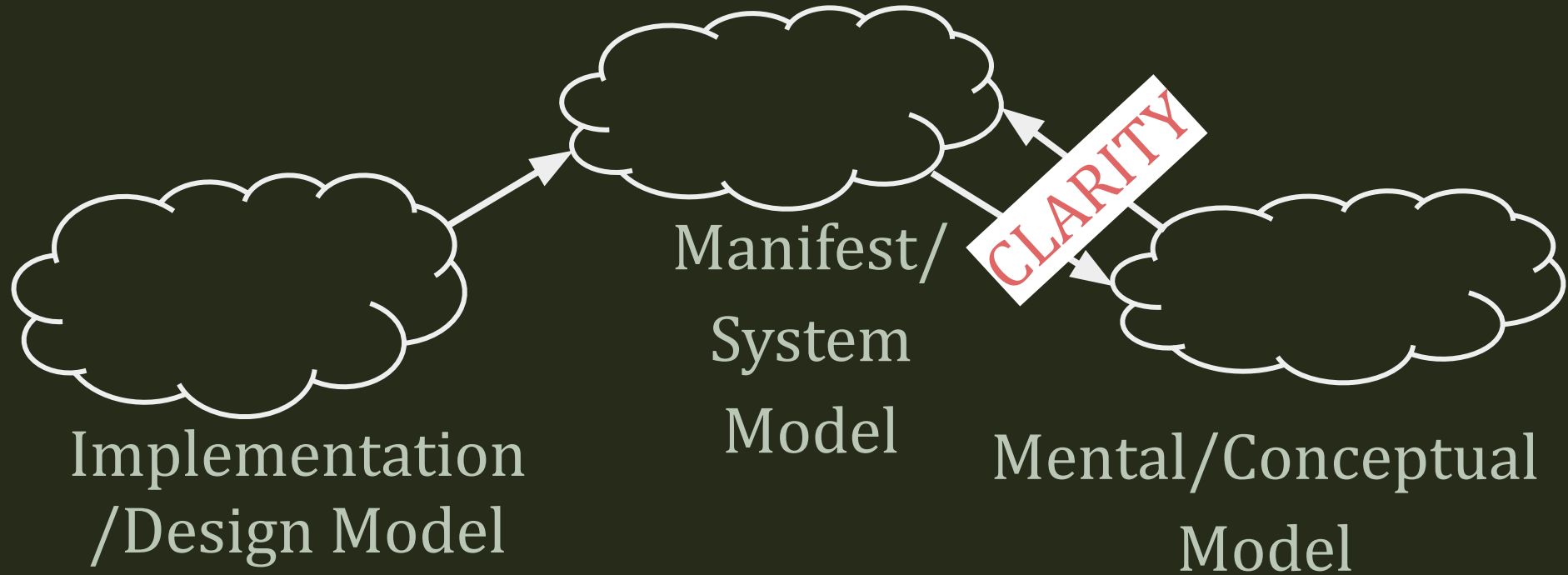
Simplicity does not solve ambiguity

Clarity does

Norman's Execution - Evaluation Cycle



Cooper's Model Terminology



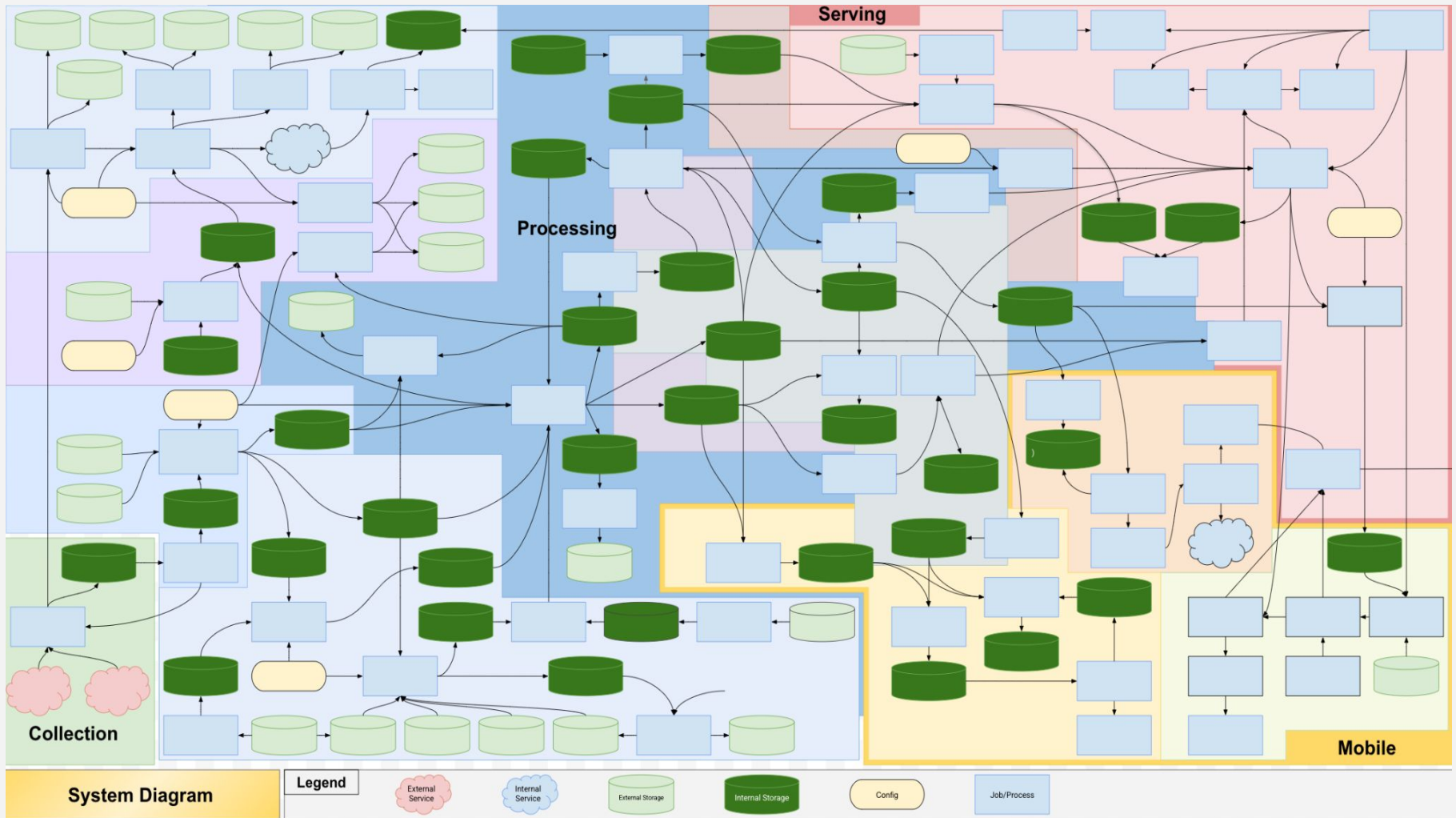
CLEAR is .

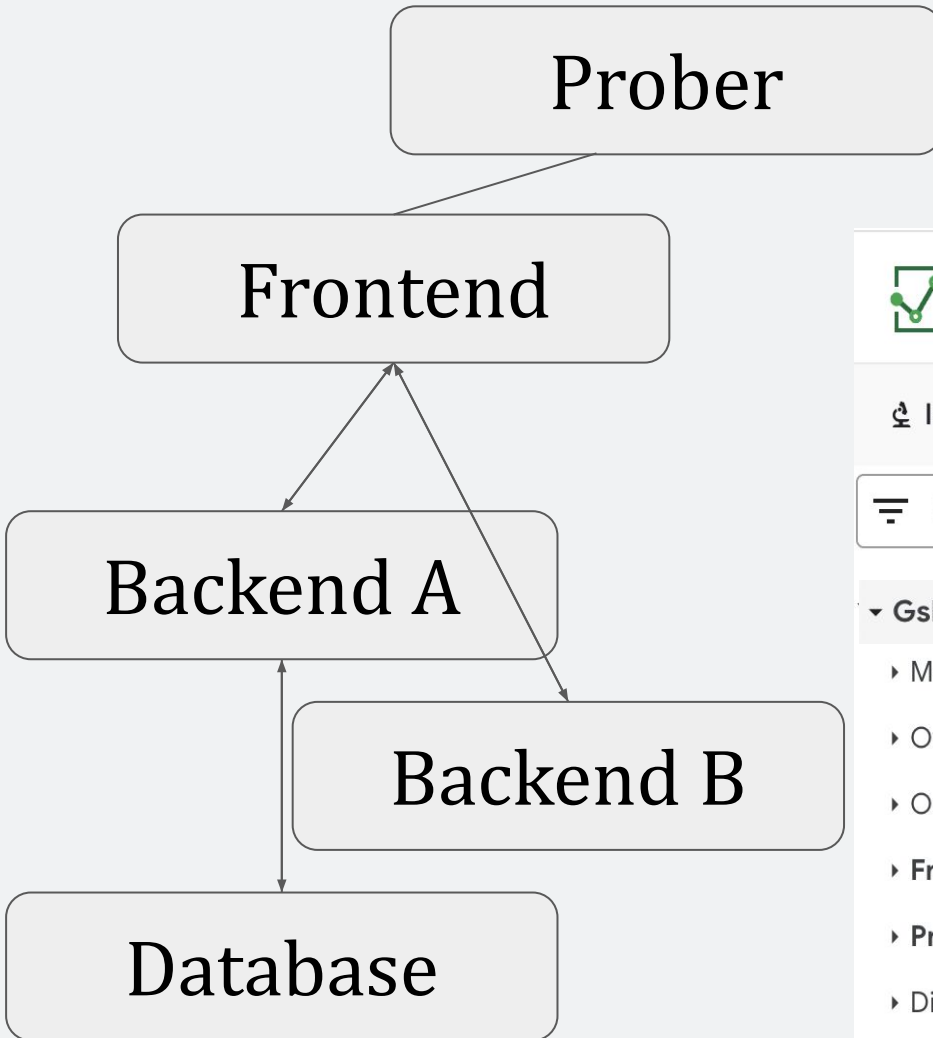


FROM BRENÉ BROWN



sketchplanations





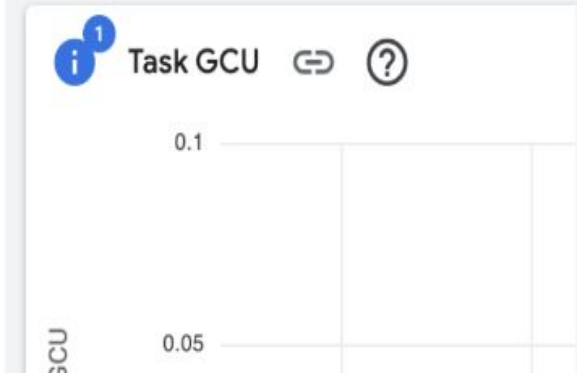
MONITORING Dashboards

[Investigate alert/incident](#)

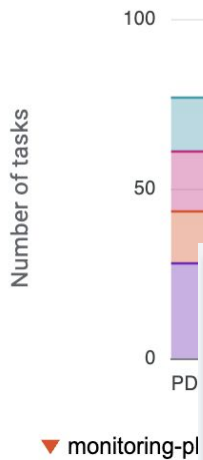
Filter dashboards

Gshoe Organization

- Most Relevant
- Overview
- Oncall
- Frontend**
- Prober**
- Discovered dashboards



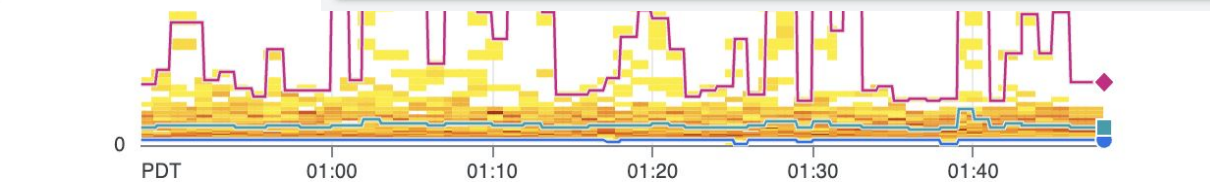
Build Labels [🔗](#) [?](#)



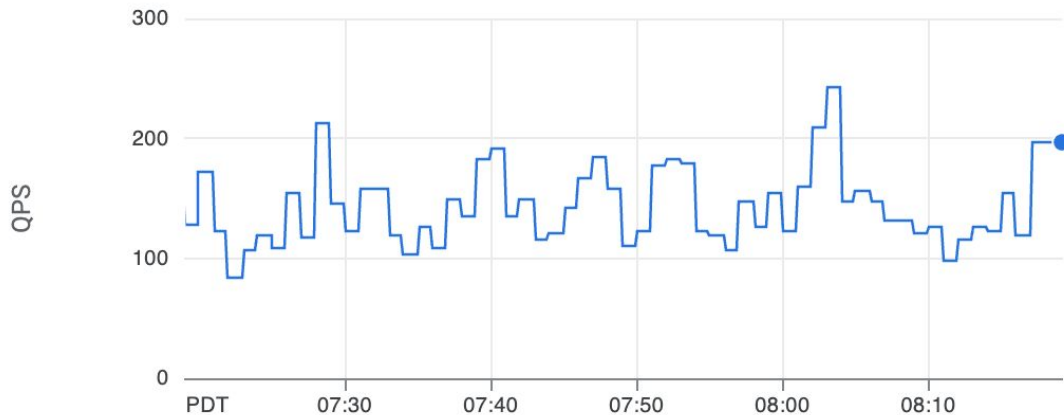
Task GCU [🔗](#) [?](#)

GCU

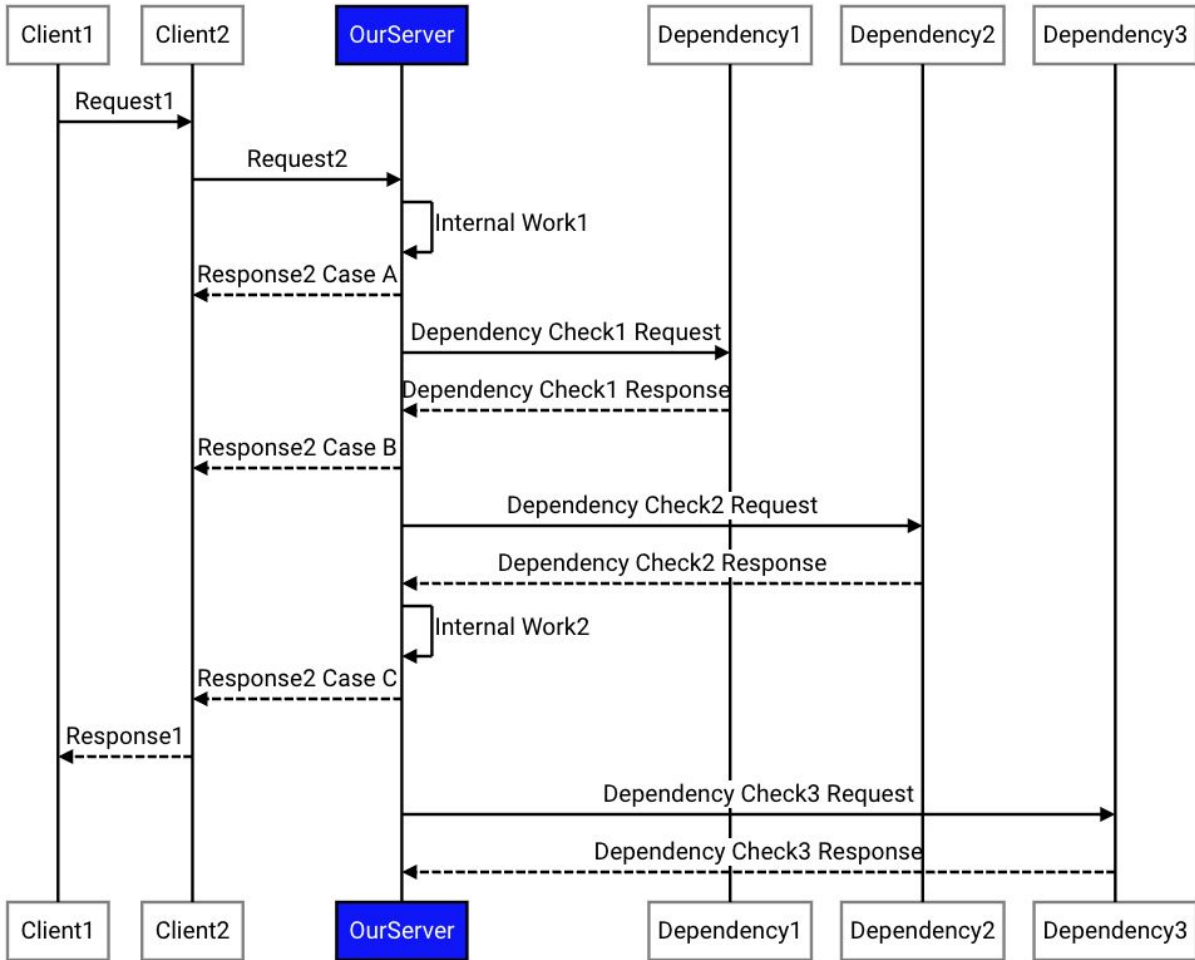
4
2
0

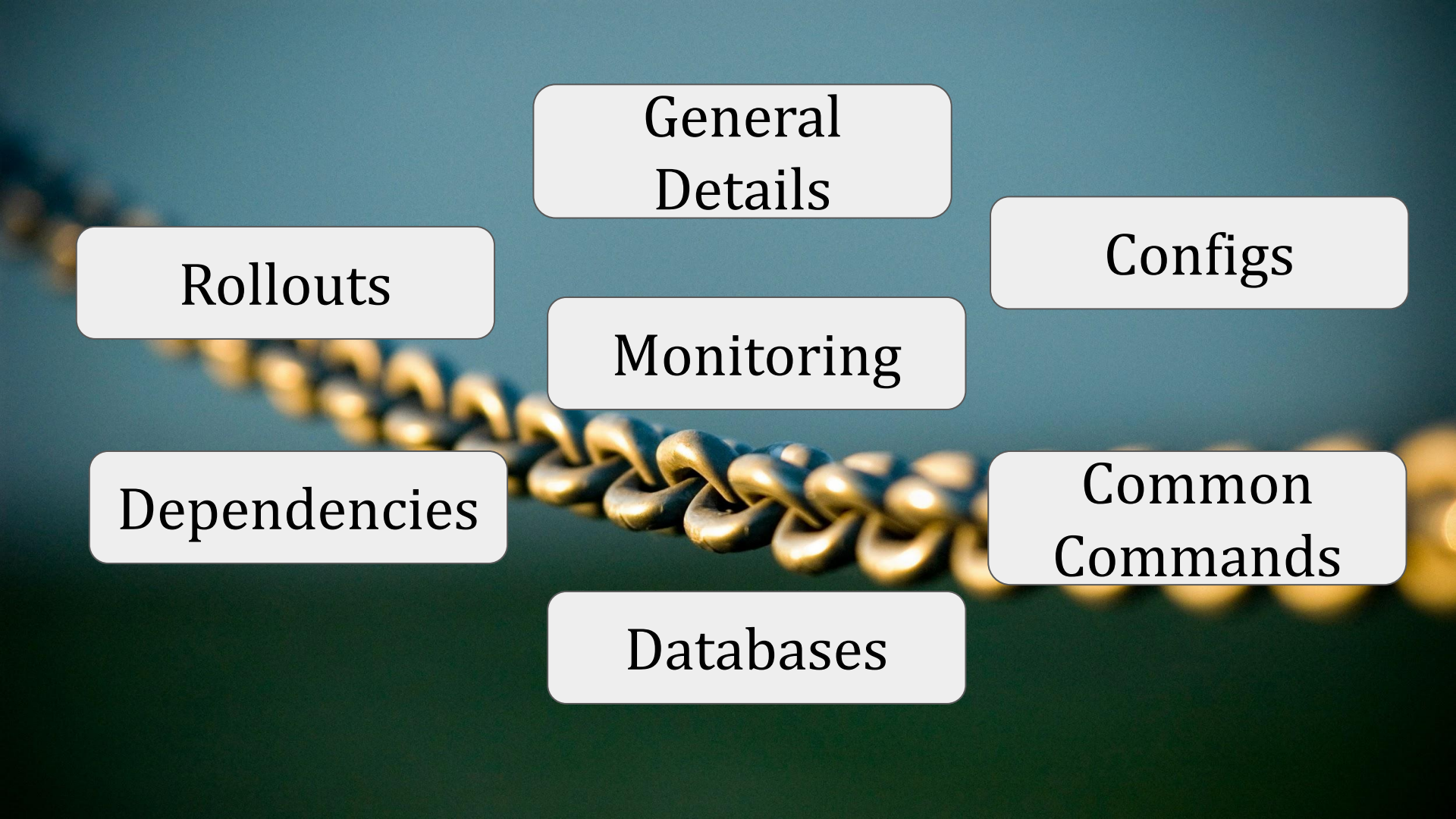


RPC Client Requests [🔗](#) [?](#) Groupby



OurServer Critical Request Flow





General
Details

Configs

Rollouts

Monitoring

Common
Commands

Dependencies

Databases



Dashboards and diagrams for clarity!

Interactions & simple tasks

Complexity \neq Confusion